



MONTHLY MEMBERSHIP PROGRESS REPORT

District 8 I

Results as of: 4/30/2014

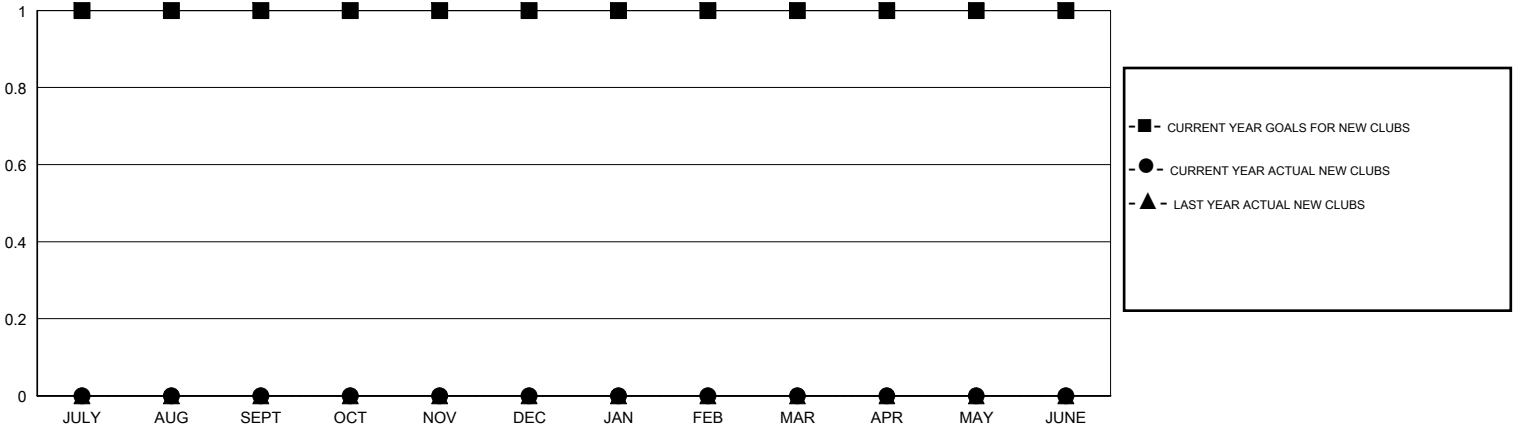
GMT: HAL GRIFFIN

LOCATION LOUISIANA

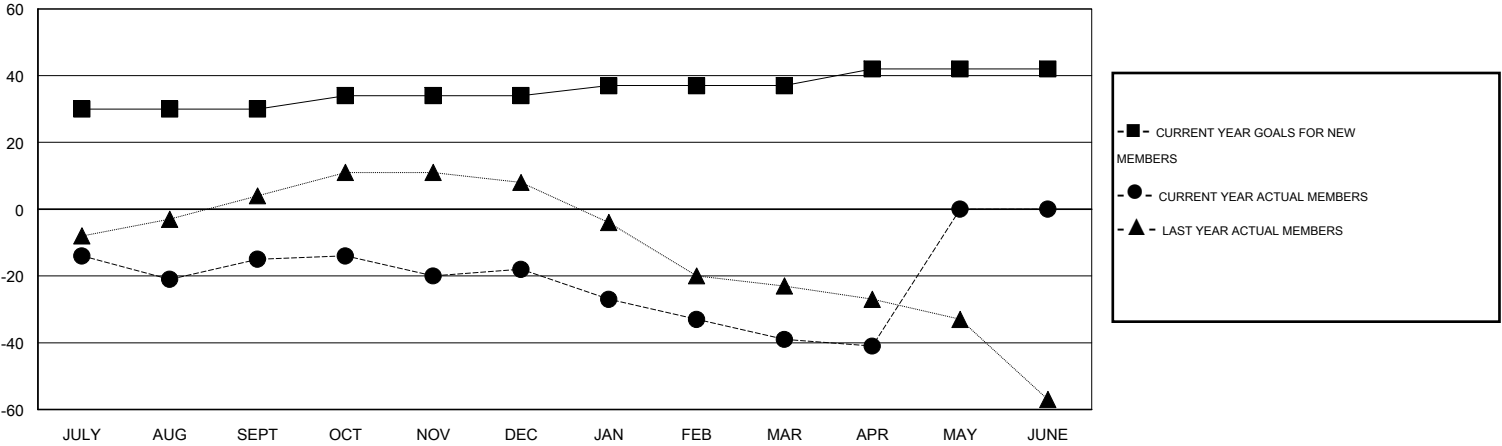
GMT CA 1

| Clubs | | | | | Members | | | | |
|-----------------------|---------------|------------------|----------------------|----------------------|-----------------------|-----------------|----------------------------|------------------------|----------------------|
| RESULTS FOR 2013-2014 | | | | | RESULTS FOR 2013-2014 | | | | |
| QUARTER | NEW CLUB GOAL | ACTUAL NEW CLUBS | ACTUAL DROPPED CLUBS | ACTUAL NET GAIN/LOSS | QUARTER | NEW MEMBER GOAL | ACTUAL TOTAL MEMBERS ADDED | ACTUAL DROPPED MEMBERS | ACTUAL NET GAIN/LOSS |
| JULY/AUG/SEPT | 1 | 0 | 1 | -1 | JULY/AUG/SEPT | 30 | 19 | 34 | -15 |
| OCT/NOV/DEC | 0 | 0 | 0 | 0 | OCT/NOV/DEC | 4 | 15 | 18 | -3 |
| JAN/FEB/MAR | 0 | 0 | 0 | 0 | JAN/FEB/MAR | 3 | 10 | 31 | -21 |
| APR/MAY/JUNE | 0 | 0 | 0 | 0 | APR/MAY/JUNE | 5 | 4 | 6 | -2 |

GOALS AND ACTUAL NEW CLUBS CUMULATIVE



GOALS AND ACTUAL MEMBERS CUMULATIVE



| | | |
|------------------------|---|-------------------------------|
| DROPPED CLUBS: 1 | 14 CLUBS OF 27 ADDED 1 OR MORE NEW MEMBERS | GENDER DISTRIBUTION |
| | | MALE 583 (80.86%) |
| | | FEMALE 138 (19.14%) |
| DROPPED MEMBERS | CLICK HERE FOR HEALTH ASSESSMENT DATA | FAMILY UNIT MEMBERS 68 |
| DECEASED 11 | | HEAD OF HOUSEHOLD 34 |
| CLUB CANCELLED 11 | | NON-HEAD OF HOUSEHOLD 34 |
| OTHER 67 | | |
| TOTAL 89 | | |